

A young man and woman are shown in a close embrace. The man is in the foreground, looking slightly to the left. The woman is behind him, her arms wrapped around his shoulders, looking towards the camera. Both are wearing light pink, short-sleeved t-shirts. The background is a soft-focus, colorful bokeh of green, blue, and purple.

IT JUST GETS BETTER

NEW STYLES, COLOURS
AND SIZES FOR 2018

A NEW YEAR BRINGS
NEW FASHION-LED
STYLES AND ON-TREND
COLOURS.

FOR THE FULL RANGE,
REQUEST YOUR COPY
OF THE 2018 BROCHURE.



ALL NEW SF STYLES COME
WITH A TEAR-OUT LABEL
FOR EASY RE-BRANDING*

* EXCEPT SF203 & SF520 WHICH ARE BRAND-FREE.



**SF203 UNISEX
WASHED BAND T**

100% COTTON
160GSM SINGLE JERSEY
PIGMENT DYED, HEAVY STONE
& HEAVY ENZYME WASHED
SIZES: XXS-XXL



**SF520 UNISEX
WASHED TOUR SWEAT**

100% COTTON
250GSM FRENCH TERRY
PIGMENT DYED, HEAVY STONE
& HEAVY ENZYME WASHED
SIZES: XXS-XXL



WASHED BLACK

EACH GARMENT HAS BEEN INDIVIDUALLY PIGMENT
DYED AND WASHED, GIVING IT A UNIQUE FINISH.



5 NEW COLOURS

TURN THE PAGE TO SEE NEW KIDS' STYLE!

SF121/SK121 MEN'S/WOMEN'S FEEL GOOD STRETCH T

96% COTTON, 4% ELASTANE
165GSM SINGLE JERSEY, ENZYME FINISH
(H.GREY: 81% COTTON, 15% VISCOSE, 4% ELASTANE.
H.BLUE, H.NAVY & H.PURPLE: 65% POLYESTER,
30% COTTON, 5% ELASTANE.
H.PINK & H.RED: 90% COTTON, 6% VISCOSE, 4% ELASTANE.
H.CHARCOAL: 60% COTTON, 36% POLYESTER, 4% ELASTANE)
MEN'S SF121 SIZES: S-XXL (BLACK & WHITE: XS-XXL)
WOMEN'S SK121 SIZES: XS-XXL

SK121 ONLY	BLACK	BRIGHT RED	NEW	NEW	SK121 ONLY
BABY PINK	BLACK	BRIGHT RED	BURGUNDY	CLAY	DEEP PURPLE
SK121 ONLY	GREEN	H.BLUE	H.CHARCOAL	H.GREY	H.NAVY
FUCHSIA	GREEN	H.BLUE	H.CHARCOAL	H.GREY	H.NAVY
SK121 ONLY	SK121 ONLY	H.RED	NEW	NEW	NAVY
H.PINK	H.PURPLE	H.RED	KHAKI	LIGHT STONE	NAVY
ROYAL	SF121 ONLY	NEW	SURF BLUE	WHITE	
	SAPPHIRE	STONE BLUE	SURF BLUE	WHITE	

SM121 KIDS' FEEL GOOD STRETCH T

96% COTTON, 4% ELASTANE
165GSM SINGLE JERSEY, ENZYME FINISH
SIZES (YEARS):
3-4. 5-6. 7-8. 9-10. 11-12.



NEW STYLE – MATCHES ADULTS' SF/SK121



NEW STYLES

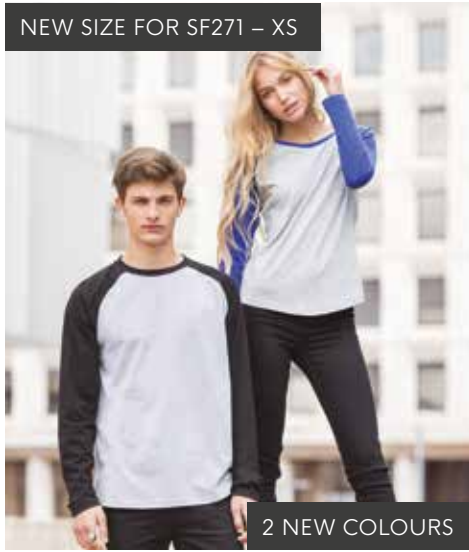


SK/SF123 WOMEN'S / MEN'S FEEL GOOD STRETCH VEST

96% COTTON, 4% ELASTANE
165GSM SINGLE JERSEY, ENZYME FINISH
(H.GREY: 81% COTTON, 15% VISCOSE, 4% ELASTANE)
WOMEN'S SK123 SIZES: XS-XXL
MEN'S SF123 SIZES: S-XXL



NEW SIZE FOR SF271 – XS



2 NEW COLOURS



2 NEW COLOURS

SF/SK271 MEN'S/WOMEN'S LONG SLEEVED BASEBALL T

100% COTTON
140GSM SINGLE JERSEY
(H.GREY: 85% COTTON, 15% VISCOSE)
MEN'S SF271 SIZES: XS-XXL
WOMEN'S SK271 SIZES: XS-XL



SM271 KIDS' LONG SLEEVED BASEBALL T

100% COTTON
140GSM SINGLE JERSEY
(H.GREY: 85% COTTON, 15% VISCOSE)
SIZES (YEARS): 5-6. 7-8. 9-10. 11-12.



NEW STYLE – MATCHES MEN'S SF258

SM258 KIDS' LONGLINE T WITH DIPPED HEM

100% COTTON
140GSM SINGLE JERSEY
SIZES (YEARS): 5-6. 7-8. 9-10. 11-12.



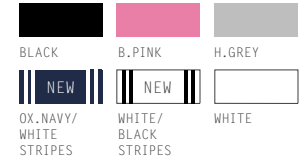
PRINTED FOR ILLUSTRATION PURPOSES; ALL GARMENTS ARE FREE FROM DECORATION



2 NEW COLOURS

SF514 UNISEX DROP SHOULDER SLOGAN TOP

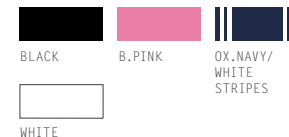
100% COTTON
220GSM SINGLE JERSEY,
GARMENT WASHED
(H.GREY: 85% COTTON,
15% VISCOSE)
SIZES: XXS-XXL



NEW STYLE

SM514 KIDS' DROP SHOULDER SLOGAN TOP

100% COTTON
220GSM SINGLE JERSEY
(H.GREY: 85% COTTON,
15% VISCOSE)
SIZES (YEARS): 5-6. 7-8.
9-10. 11-12.





NEW COLOUR

**SF525 UNISEX
SLIM FIT SWEAT**

60% COTTON, 40% POLYESTER
250GSM BRUSHED BACK FLEECE
(H.GREY: 75% COTTON 20% POLYESTER,
5% VISCOSE)
SIZES: XXS-XXL



**SF/SK425 MEN'S/WOMEN'S
SLIM FIT CUFFED JOGGERS**

60% COTTON, 40% POLYESTER
250GSM BRUSHED BACK FLEECE
(H.GREY: 75% COTTON, 20% POLYESTER,
5% VISCOSE)
MEN'S SF425 SIZES: S-XXL
WOMEN'S SK425 SIZES: XS-XL



NEW COLOUR

**SK513 WOMEN'S
SLOUNGE SWEAT**

BLACK: 100% COTTON
H.GREY: 85% COTTON, 15% VISCOSE.
OXFORD NAVY MARL:
60% COTTON, 40% POLYESTER
250GSM FRENCH TERRY
SIZES: S-XL



NEW STYLE

**SF526 UNISEX SLIM FIT
ZIP-THROUGH HOODY**

60% COTTON, 40% POLYESTER
250GSM BRUSHED BACK FLEECE
(H.GREY: 75% COTTON, 20% POLYESTER, 5% VISCOSE)
SIZES: XXS-XXL



**SM526 KIDS' SLIM FIT
ZIP-THROUGH HOODY**

60% COTTON, 40% POLYESTER
250GSM BRUSHED BACK FLEECE
(H.GREY: 75% COTTON, 20% POLYESTER, 5% VISCOSE)
SIZES (YEARS): 5-6. 7-8. 9-10. 11-12.



NEW STYLE

**SK240 WOMEN'S REVERSIBLE
WORKOUT VEST**

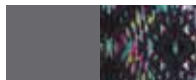
89% POLYESTER, 11% ELASTANE
270GSM BONDED INTERLOCK
SIZES: XS-XL

**SK424 WOMEN'S REVERSIBLE
WORKOUT LEGGINGS**

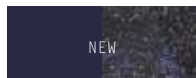
89% POLYESTER, 11% ELASTANE
270GSM BONDED INTERLOCK
SIZES: XS-XL



BLACK/PRINT



CHARCOAL/BRIGHT AZTEC



NAVY/BUBBLES



NEW PRINT

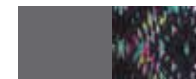


NEW STYLE – MATCHES
WOMEN'S SK240

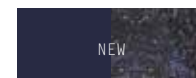
NEW PRINT – MATCHES
WOMEN'S SK424



BLACK/PRINT



CHARCOAL/BRIGHT AZTEC



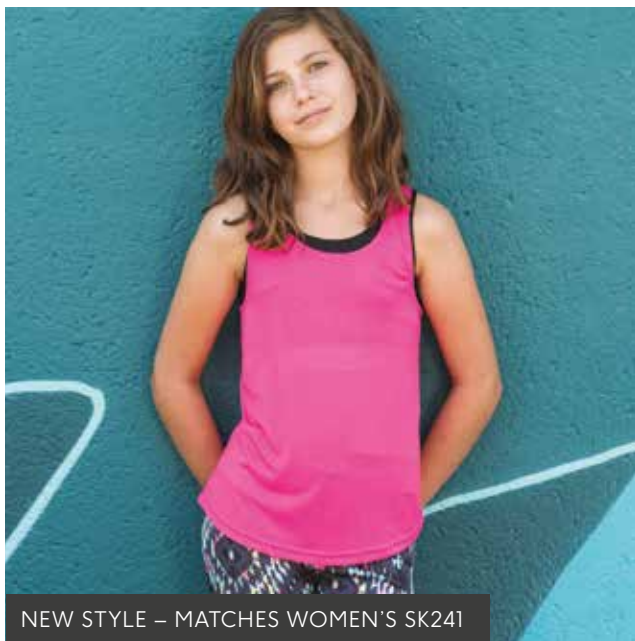
NAVY/BUBBLES

**SM241 KIDS' FASHION
WORKOUT VEST**

90% POLYESTER, 10% ELASTANE
150GSM SINGLE JERSEY
SIZES (YEARS):
5-6. 7-8. 9-10. 11-12.



BLACK NEON PINK WHITE



NEW STYLE – MATCHES WOMEN'S SK241

**SM240 KIDS'
REVERSIBLE
WORKOUT VEST**

89% POLYESTER, 11% ELASTANE
270GSM BONDED INTERLOCK
SIZES (YEARS): 5-6. 7-8.
9-10. 11-12.

**SM424 KIDS'
REVERSIBLE
WORKOUT LEGGINGS**

89% POLYESTER, 11% ELASTANE
270GSM BONDED INTERLOCK
SIZES (YEARS): 5-6. 7-8.
9-10. 11-12.

NEW STYLE



SK263 WOMEN'S SLOUNGE TOP

100% VISCOSE
170GSM SINGLE JERSEY
SIZES: XS-XL



BLACK



NEW STYLE – MATCHES WOMEN'S SK236

NEW STYLE – CO-ORDINATES WITH SK236



SK436 WOMEN'S FASHION BRIEF (FOR SUBLIMATION PRINTING)

96% POLYESTER, 4% ELASTANE
100% COTTON GUSSET
240GSM SINGLE JERSEY (+ JACQUARD BAND)
SIZES: XS-L



BLACK / WHITE

WHITE / WHITE

SM236 KIDS' FASHION CROP TOP (FOR SUBLIMATION PRINTING)

WITH DOUBLE LAYER FRONT
96% POLYESTER, 4% ELASTANE
240GSM SINGLE JERSEY (+ JACQUARD BAND)
SIZES (YEARS): 5-6. 7-8. 9-10. 11-12.



BLACK / WHITE

WHITE / WHITE

NEW COLOUR



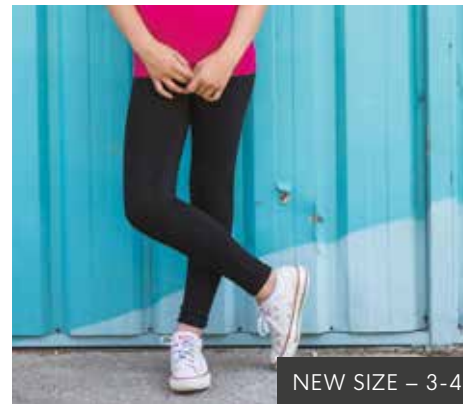
SK235 WOMEN'S WORKOUT CROPPED TOP

BLACK: 65% POLYAMIDE, 31% POLYESTER, 4% ELASTANE
NEON PINK: 92% POLYAMIDE, 8% ELASTANE
280GSM DOUBLE LAYER INTERLOCK
SIZES: XS-L



BLACK

NEON PINK



NEW SIZE – 3-4

SM064 KIDS' LEGGINGS

96% COTTON, 4% ELASTANE
190GSM SINGLE JERSEY
SIZES (YEARS): 3-4. 5-6. 7-8. 9-12. 11-12.



BLACK

NEW COLOUR



SK069 WOMEN'S RETRO SHORTS

100% COTTON
220GSM SINGLE JERSEY
(H.GREY: 85% COTTON, 15% VISCOSE)
SIZES: XS-XXL



BLACK / BLACK

BLACK / WHITE

H.GREY / BLACK

NAVY / WHITE



RED / WHITE

RED / YELLOW



NEW SIZE – XS

SK064 WOMEN'S LEGGINGS

96% COTTON, 4% ELASTANE
190GSM SINGLE JERSEY
SIZES: XS-XL



BLACK

NEW STYLES



SK083 WOMEN'S TARTAN LOUNGE PANTS

100% COTTON
115GSM FLANNEL
(TWILL WEAVE)
SIZES: XXS-XL



RED/NAVY CHECK
NAVY/GREEN CHECK

SK082 WOMEN'S TARTAN FRILL LOUNGE SHORTS

100% COTTON
115GSM FLANNEL
(TWILL WEAVE)
SIZES: XXS-XL



RED/NAVY CHECK
NAVY/GREEN CHECK

SF083 MEN'S TARTAN LOUNGE PANTS

100% COTTON
115GSM FLANNEL
(TWILL WEAVE)
SIZES: XS-XXL



RED/NAVY CHECK
NAVY/GREEN CHECK

SF470 UNISEX ALL-IN-ONE

80% COTTON, 20% POLYESTER
280GSM BRUSHED BACK FLEECE
(H.GREY: 71% COTTON, 23% POLYESTER,
6% VISCOSE)
SIZES: XXS/XS. S/M. L/XL.



BLACK FUCHSIA H.GREY NAVY

SM470 KIDS' ALL-IN-ONE

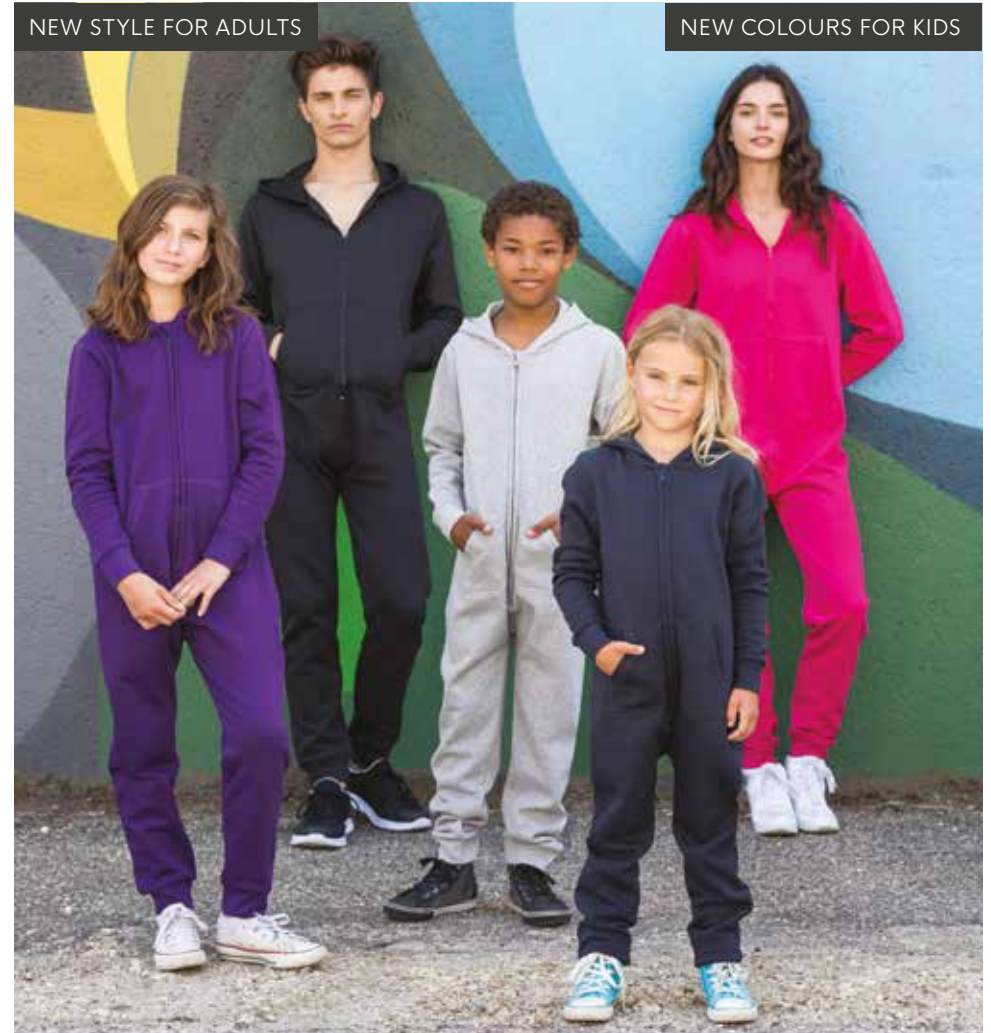
80% COTTON, 20% POLYESTER
280GSM BRUSHED BACK FLEECE
(H.GREY: 71% COTTON, 23% POLYESTER,
6% VISCOSE)
SIZES (YEARS):
3-4. 5-6. 7-8. 9-10. 11-12. 13.



BLACK BRIGHT RED FUCHSIA GREEN
H.GREY NAVY PURPLE SAPPHIRE

NEW STYLE FOR ADULTS

NEW COLOURS FOR KIDS



SF202
UNISEX STRIPED T

100% COTTON
160GSM SINGLE JERSEY
(H.GREY: 85% COTTON,
15% VISCOSE)
SIZES: XXS-XXL



H.GREY/
WHITE WHITE/
BURGUNDY WHITE/
OX.NAVY



NEW COLOUR

PRINTED FOR ILLUSTRATION PURPOSES. ALL GARMENTS ARE FREE FROM DECORATION



SF044 MEN'S
LONG SLEEVED
STRETCH POLO

96% COTTON, 4% ELASTANE
200GSM MICRO PIQUE
SIZES: S-XXL



BLACK WHITE

NEW COLOUR – MATCHES WOMEN'S SK044



NEW COLOUR

SF560 MEN'S
BRUSHED CHECK
CASUAL SHIRT

65% POLYESTER, 35% VISCOSE
120GSM TWILL, BRUSHED
SIZES: S-XXL



BURGUNDY
CHECK LIGHT GREY
CHECK NAVY CHECK



SF-CLOTHING.COM



[SF.PROMO.CLOTHING](https://www.facebook.com/SF.PROMO.CLOTHING)



[SFSKINIFIT](https://twitter.com/SFSKINIFIT)



[SFSKINIFIT](https://www.pinterest.com/SFSKINIFIT)



[SFSKINIFITCLOTHING](https://www.instagram.com/SFSKINIFITCLOTHING)